

Recombinant Protein L-Cys, His

Catalog #: 1004-02

Lot #: See label

PrimeGene
a biotechne brand

Description

Molecular Weight:

Approximately 41.6 kDa with 6×His-tag on N-terminus and a Cys on C-terminus, a single non-glycosylated polypeptide chain containing 373 amino acids. But it migrates with an apparent molecular mass of 46 kDa in SDS-PAGE.

Source:

Escherichia coli.

Quantity:

1mg/10mg/100mg/1g

Protein per Gram Powder:*

See Label.

Concentration for 1 unit OD at 280 nm:

1.159 mg/ml

Specification

Physical Appearance:

Sterile Filtered White lyophilized (freeze-dried) powder.

Purity:

> 96 % by SDS-PAGE analysis.

Specificity:

The recombinant Protein L is a genetically engineered protein containing 5 IgG-binding regions of protein L. Cell wall binding region, cell membrane binding region and albumin binding region have been

removed from the recombinant Protein L to ensure the maximum specific IgG binding. The recombinant Protein L is ideal for purification of polyclonal or monoclonal IgG antibodies. Protein L binds to human, mouse, rat and pig IgG.

Endotoxin Level:

Less than 0.1 EU/μg of Protein L-Cys, His as determined by LAL method.

Formulation:

Lyophilized from additive free solution.

Usage Guide

Stability & Storage:

- Use a manual defrost freezer and avoid repeated freeze-thaw cycles.
- 12 months from date of receipt, -20 to -70 °C as supplied.
- 1 month, 2 to 8 °C under sterile conditions after reconstitution.
- 3 months, -20 to -70 °C under sterile conditions after reconstitution.

Reconstitution:

Dissolve in distilled water or saline.

Shipping:

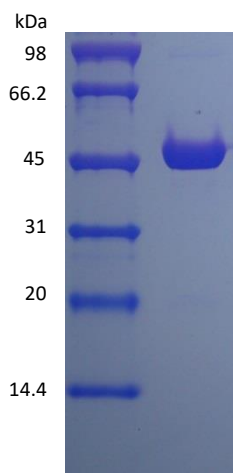
The product is shipped at ambient temperature. Upon receipt, store it immediately at -20 °C.

*Masses of the protein and powder are not equal.

Background

Recombinant Protein L contains 5 kappa-binding domain. Protein L has the unique ability to bind through kappa light chain interactions without interfering with the antibody's antigen-binding site. This gives Protein L the ability to bind a wider range of Ig classes and subclasses than other antibody-binding proteins.

SDS-PAGE



Rev. 09/19/2023 V.3

Manufactured By Shanghai PrimeGene Bio-Tech Co., Ltd.

FOR RESEARCH USE ONLY. NOT FOR HUMAN USE.

Website: www.primegene.com

Email: info.pg@bio-techne.com

Tel: +86-21-52380373

Fax: +86-21-61077348